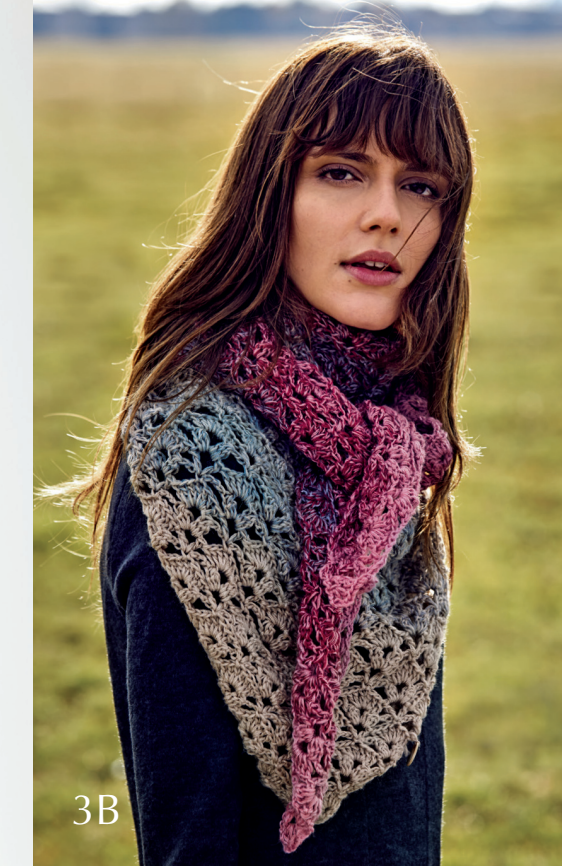


SHADES OF ALPACA SILK

EUR 1,00 | CHF 1,50



www.lanagrossa.com

Cover design/1 B – Wrap/Poncho



You will need **200 g** of Lana Grossa **Shades of Alpaca Silk** (45% Merino wool, 35% baby alpaca, 20% silk; 680 m/200 g) in Beige/Light Grey/Ice Blue/Mocca (**col 304**) or **200 g** in Beige/Brown/Mocha/Petrol (**col 306**). Long size 5 and 6 mm circular needles.

Size Approx. 124 x 67 cm.

Garter selvage: K first and last st of every row. Work a garter selvage throughout.

Seed stitch: Row 1: K1, p1. On all foll rows, purl the knit sts and knit the purl sts.

Zigzag lace: Multiple of 6. Work according to chart. Numbers at right edge of chart indicate RS rows; on WS rows, p all sts and yos. Work the 6-st patt rep throughout. Rep rows 1 – 20.

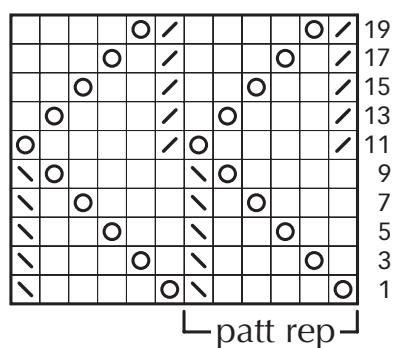
Gauge: 16 sts and 25 rows = 10 x 10 cm in zigzag lace on size 6 mm needles.

Instructions: With size 5 mm circular needle cast on 200 sts for lower edge of back. Beg and end with a WS row work in seed st for 5 rows = approx. 1.5 cm. Change to size 6 mm circular needle. Next RS row: Garter selvage, work in seed st as established over next 3 sts, work zigzag lace over next 192 sts, work in seed st as established over next 3 sts, garter selvage. Cont in patt as established for another 79 rows and piece meas approx. 33.5 cm from cast-on. Next RS row: Work in patt, bind off center 44 sts for neck. Next WS row: Work in patt, cast on 44 sts over bound-off sts. Cont in patt as established for another 78 rows. Change to size 5 mm circular needle. Work in seed st across all sts for 5 rows = approx. 1.5 cm. Bind off all sts in patt.

Finishing: Pin piece to measurements and block.

Info: The piece may be worn horizontally as a wrap as shown on cover or vertically as a poncho with a V-neck at front as shown in photo 1B.

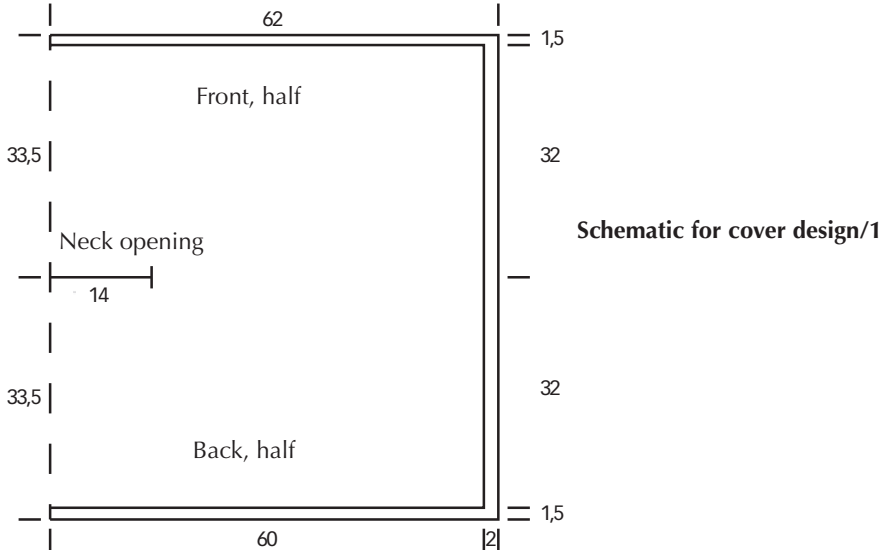
Chart



patt rep

Chart key:

- = k1
- ⊗ = yo
- ⊠ = k2tog
- ⊞ = sl 1 kwise, k1, pass slipped st over knitted st

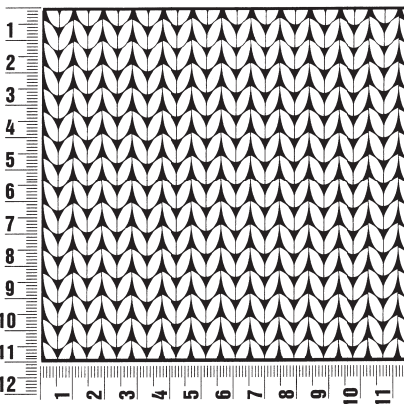


Schematic for cover design/1B

Gauge Swatch

Before you begin knitting...

...make a gauge swatch. Use the recommended needles, yarns and pattern stitch for your gauge swatch. It should measure approx. 12 cm x 12 cm. Cast on and bind off rows, as well as selvage stitches should not be included in the measurement. Pin your swatch and block it as you would the finished pieces of the garment. Count stitches and rows over 10 cm. If your gauge swatch is too small, switch to larger needles. If your gauge swatch is too big, switch to smaller needles.



Abbreviations

beg = begin(ning) · **cont** = continue · **inc** = increase · **patt** = pattern · **p** = purl · **rep** = repeat(s) · **RS** = right crease(ing) · **k** = knit · **kwise** = as if to knit · **meas** = measures · **M1R** = lift strand between sts from the back and knit this strand through the front loop · **yo**(s) = yarn over(s)

Design 2 A/B – Scarf in eyelet pattern



You will need **200 g** of Lana Grossa **Shades of Alpaca Silk** (45% Merino wool, 35% baby alpaca, 20% silk; 680 m/200 g) in Sun Yellow/Orange/Mustard/Mocha (**col 308**) or **200 g** in Mustard/Green/Beige/Mocha (**col 305**). Long size 5 and 6 mm circular needles.

Size Approx. 212 x 29 cm

Garter st: K every row.

St st: K on RS, p on WS.

Eyelet patt: Even number of sts. Row 1: Knit. Row 2: Purl. Row 3: * Yo, k2tog; rep from * to end. Row 4: Purl. Row 5: * K2tog, yo; rep from * to end. Row 6: Purl. Row 7: Knit. Row 8: Purl. Rep rows 1 – 8.

Gauge: 16 sts and 28 rows = 10 x 10 cm in eyelet patt on size 6 mm needles.

Instructions: With size 5 mm circular needle cast on 340 sts. Beg and end with

a WS row work in garter st for 5 rows = approx. 1.5 cm. Change to size 6 mm circular needle. Next RS row: Work first 5 sts in garter st as established, work eyelet lace over next 330 sts, work last 5 sts in garter st as established. Cont in patt as established for another 73 rows and piece meas approx. 27.5 cm from cast-on. Change to size 5 mm circular needle. Work in garter st across all sts for 5 rows = approx. 1.5 cm. Bind off all sts kwise.

Finishing: Pin piece to measurements and block.

Publisher's Info

Publisher: Lana Grossa GmbH, Gaimersheim, www.lanagrossa.de
Photos: Wilfried Wulff, www.wilfriedwulff.com · **Styling:** Antonia Haacks/Bigoudi
Hair and Make-Up: Nadja Kaiser · **Model:** Rafaela Bosi/PS Model Management
Designs: Lana Grossa Studio · **Instructions:** Regina Bühler
Graphic/Layout/Litho: MXM Digital Service GmbH, München
Print: Druck Pruskil, Gaimersheim

All designs are copyrighted. No material herein may be reproduced in any form by any means without the express written consent of the publisher.



Design 3 A/B/C – Crocheted shawl in shell pattern



You will need **200 g** of Lana Grossa **Shades of Alpaca Silk** (45% Merino wool, 35% baby alpaca, 20% silk; 680 m/200 g) in Beige/Grey/Bordeaux/Antique Pink (**col 302**) or **200 g** in Ice Blue/Mint/Grey-Blue/Blue (**col 303**) or **200 g** in Bordeaux/Orange/Beige-Pink/Blue (**col 301**).

Size Approx. 87 x 185 cm

Shell patt: Work according to chart. Work first dc on first row in 5th ch from hook. Numbers at right edge of chart indicate RS rows, numbers at left edge of chart indicate WS rows. Work incs as at each edge as shown on chart. Work rows 1 – 7 once, then rep rows 4 – 7. Cont to work incs as established, work the patt rep throughout.

Gauge: 2 patt reps and 8 rows = 14 x 13 cm.

Instructions: Ch 5. Work in shell pat according to chart for 54 rows = approx. 87 cm or to end of 2nd skein. Fasten off.

Finishing: Carefully weave in all ends. Pin piece to measurements and block.

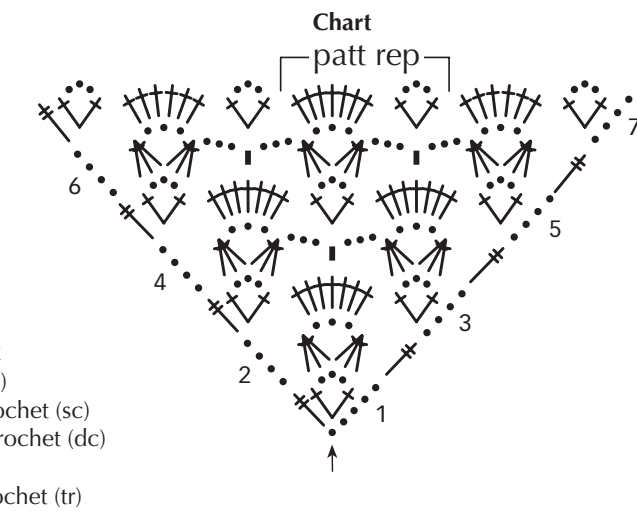


Chart key:

- ↑ = beg work
- = chain (ch)
- ↑ = single crochet (sc)
- ↑↑ = double crochet (dc)
- ↑↑↑ = treble crochet (tr)

Design 4 A – Triangular shawl in pattern mix



You will need **200 g** of Lana Grossa **Shades of Alpaca Silk** (45% Merino wool, 35% baby alpaca, 20% silk; 680 m/200 g) in Ice Blue/Mint/Grey-Blue/Blue (**col 303**). Long size 5, 6.5 and 9 mm circular needles.

Size Approx. 128 cm long, 110 cm wide (measured along short edge)

Garter selvage: K first and last st of every row. Work a garter selvage throughout.

Garter st: On size 5 mm needles: K every row.

St st: On size 5 mm needles: K on RS, p on WS.

Garter ridges: On size 5 mm needles: Rows 1 – 3: Work in St st. Row 4: Knit. Rep rows 1 – 4.

Star stitch: Multiple of 4 + 1. Work according to chart. Numbers at right edge of chart indicate RS rows, numbers at left edge of chart indicate WS rows. Beg with sts before patt rep, work 4 sts between arrows for patt rep, end with sts after patt rep. Work rows 1 – 5 once, then rep rows 2 – 5. Note: Work RS rows on size 5 mm needles, work WS rows on size 6.5 mm needles.

Gauges: 15.5 sts and 31 rows = 10 x 10 cm in garter st; 15.5 sts and 29 rows = 10 x 10 cm in garter ridges; 15.5 sts and 20 rows = 10 x 10 cm in star st.

Instructions: With size 5 mm circular needle cast on 3 sts. Beg with a WS row, work in garter st for 87 rows. Work garter ridges for 26 rows. Work star st according to chart for 34 rows. Work garter ridges

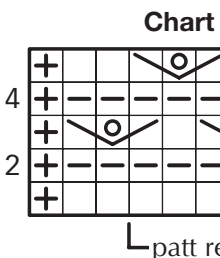


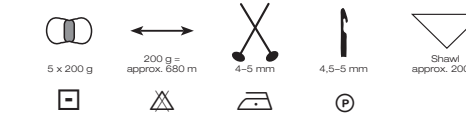
Chart key:

- ⊞ = garter selvage
- = k1
- ⊠ = p1
- ⊞⊞ = k3tog, leaving sts on left needle, yo, k3tog same 3 sts again

LANA GROSSA

SHADES OF ALPACA SILK

45% Merino wool
35% baby alpaca
20% silk



301

302

303



304

305

306



307

308